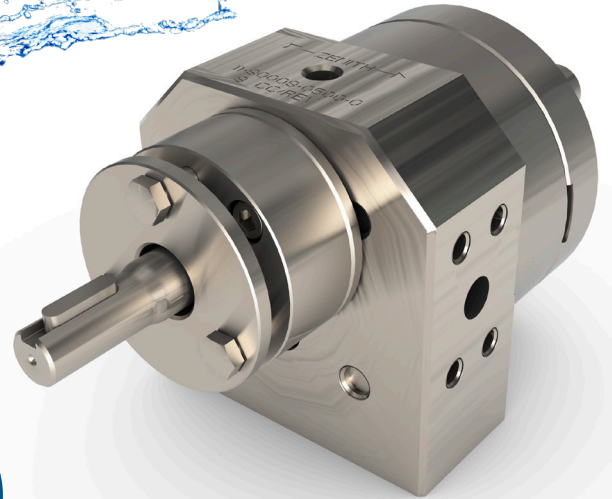


UNINTERRUPTED PERFORMANCE WITH CIP-CAPABLE PRECISION PUMPS



# CLEAN-IN-PLACE FOR C-9000 SERIES



SCAN HERE  
FOR MORE INFORMATION

## PRODUCT DESCRIPTION:

### ADVANCED GEAR PUMPS FOR HYGIENIC, TIME-SAVING OPERATIONS C-9000 SERIES PRECISION GEAR PUMPS

Designed for demanding industrial, food & beverage, and medical manufacturing environments, the Zenith C-9000 Series supports full Clean-in-Place capability without pump removal. By remaining in place during sanitation cycles, it minimizes downtime, reduces manual intervention, and maintains the high-accuracy metering performance.

## KEY FEATURES OF ZENITH C-9000 SERIES FOR CIP PROCESSES



True In-Place  
Cleaning



High-Precision  
Metering



Reduced  
Downtime



Improved Hygiene  
Compliance

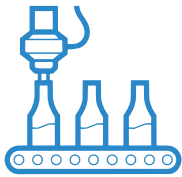


Lower  
Maintenance Costs

## TECHNICAL DETAILS:

Series	Materials:	Outlet Pressure:	Clean-in-Place	Max. Operating Temperature:	Flow Rate:
C-9000	316 Stainless Steel	Up to 1,000 psi (70 bar)	Yes	350 °F	Up to 9,000 cc/min

## INDUSTRIES:



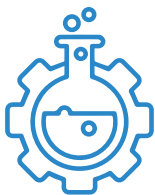
Food and Beverage



Fibre



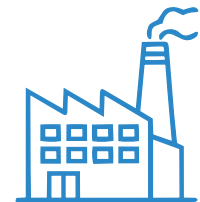
Pharmaceutical



Chemical



Paint



General Industry

## APPLICATIONS:

- Coating – Uniform, consistent layer application
- Filling – Accurate and repeatable volume control
- Extrusion – Stable, continuous material flow
- Additive – Precise dosing of additives
- Injection – Controlled, high-precision delivery
- Dosing – Exact measurement every time
- Spraying – Fine, even distribution
- Spinning – Smooth and consistent fiber formation



CIRCOR | ZENITH  
1710 Airport Rd,  
Monroe, NC 28110  
USA

CIRCOR and ZENITH are registered trademarks of CIRCOR International or its subsidiaries in the U.S. and/or other countries. ©2026, CIRCOR International. All rights reserved. CIP EN-IND-04/26

Discover how C-9000 can transform your operations. Contact us today!



[pumps.circor.com](https://pumps.circor.com)